

## Artist's Past of Pain and Beauty Emerges From Trip to Romania

review by David Stone

"For many years, almost 25, I was not ready to face the past, and go back to those places...it was too painful," explains Georgette Sinclair as she puts the finishing touches on her new solo exhibit, *Windows To The Soul*, at Gallery RIVAA.

Prompted by her son, who had recently returned from a trip to Romania, Sinclair decided to make her own journey.

"I'd like to have some paintings from Romania," her son urged, and in spite of many painful memories, she decided to go "on the spur of

Her careful, intricate balancing of colors, mimicking varieties found in nature, lifts familiar subjects, like farmlands, to a personal level of persuasion.

Sinclair sees like an artist and has a gift for getting her visions onto the canvas with emotion.

"While we traveled, I tried to do some quick small studies, blocking in main shapes or a touch of local color to help me out later with the finished painting. There was so much beauty everywhere," she recalls.

But the journey had its difficult moments as well, especially as it

freshened memories of deprivation left behind when she immigrated to a better life in America. "With the help of a few far-distant relatives, I was able to face the grave of my parents, the good people who gave me the chance of life and made me the artist and the

person that I am today."

Moving beyond memories of hardships and losses, Sinclair continues, "We crossed the great Carpathian Mountains and went to see the famous old monasteries of Bucovina, which are well known not only for the history, but also for unique decorative art. This is where I found my peace.

"One day, we saw the gypsies who make copper pots and sell them on the side of the road. We stopped, and suddenly I was facing these people from an old Transylvanian tale, the old gypsy man with the long white beard, wearing a big black hat, his gypsy woman with a face as creased as the trunk of a tree. They inspired portraits I painted later."

*Head Of A Gypsy* and *Gypsy Woman* give us almost ghostlike figures. Icons from a past separated more by years than by miles from modern life, they haunt with the lonely dignity that Sinclair raises.

Portraits make up a small part of the soulful art Sinclair spent the past few days hanging on the gallery walls, each one that Sinclair describes as a separate window to her soul. "Behind each painting there is a story that stays with me forever."

Georgette Sinclair's *Windows To The Soul* opens today (Saturday, October 20), with a reception, 6:00-9:00 p.m. The show will run through November 25.



the moment."

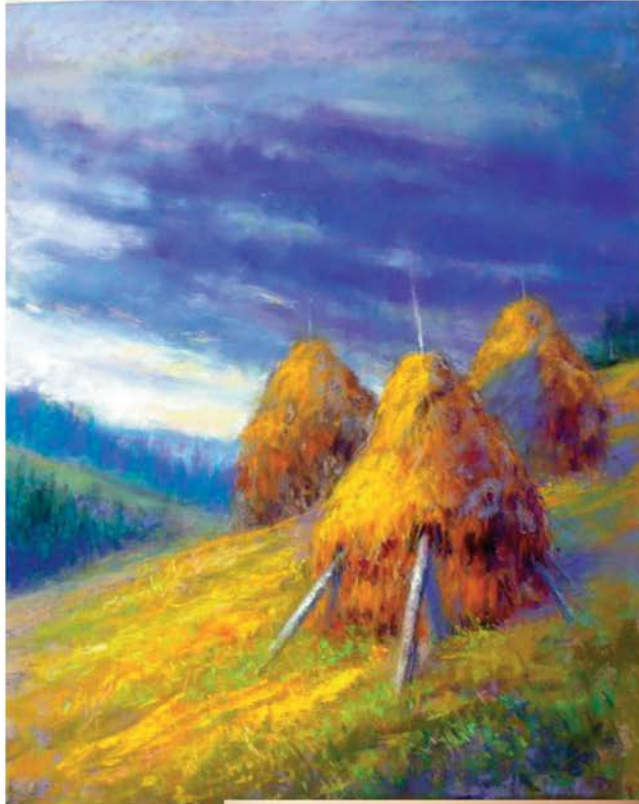
The places she thought of as "too painful" are the ones in which she grew up, specifically in the area tucked into the Carpathian Mountains - Transylvania.

"I was shocked to see the change in people that I knew. The harshness of life left deep prints. Some of the people I had a hard time recognizing. But they were all very happy to see me again, and everywhere I went I was welcomed.

"I fell in love again and again with haystacks, gold fields of wheat and sunflowers, hills and mountains, creeks and lakes, with people who keep the life tradition going on." Passion generated by her return to the land of her birth informs the new works in *Windows To The Soul*.

*Haystacks From Carpathian Mountains* reflects in mellow tones the bucolic feel of a countryside embedded in the past. The fields are quiet at the end of haying as the towering peaks stand sentinel nearby. Another pastel painting, *Haystack Near The Creek In Transylvania*, takes viewers to an even more remote place of quiet and retreat. Viewing the art, you immediately feel the distance from hectic New York.

An accomplished painter and regular contributor to Gallery RIVAA exhibits, Sinclair works most effectively in pastels that convey a quiet vibrancy in lyrical pastoral settings.



Gallery hours are 1:00-5:00 p.m. Tuesday and Thursday; 6:00-9:00 p.m. Wednesday and Friday, and 11:00 a.m.-5:00 p.m. Saturday and Sunday.

